

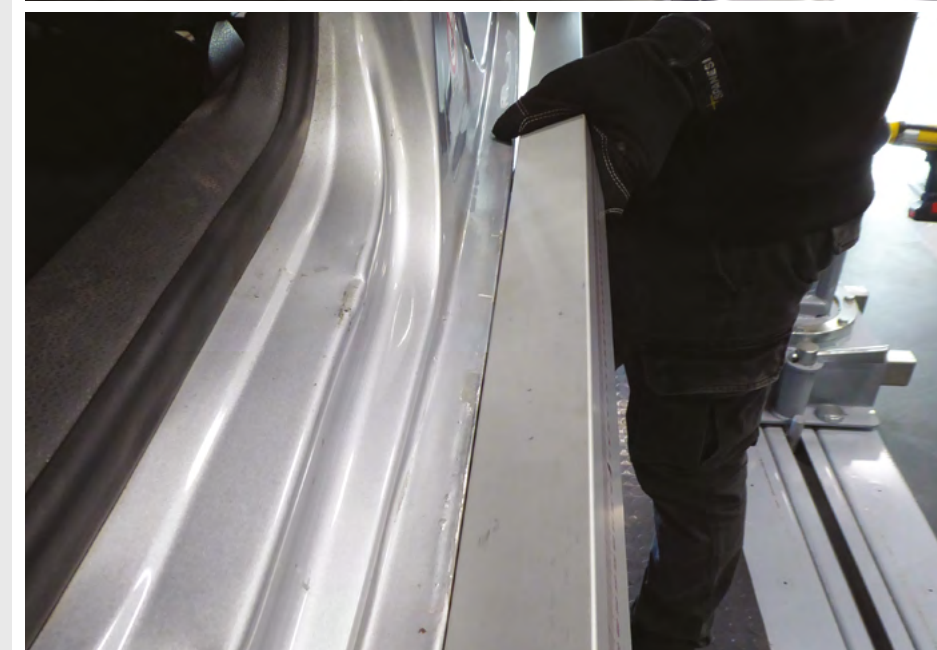
**PULL UP!**



 **SPANESI®**



PATENT PENDING



## The new repair method

The PULL UP! repair system is the latest Spanesi innovation, which utilizes suction cups, glue and slide hammers to produce flawless panel repairs.

Suitable for both steel and aluminium substrates, straightening is performed from the exterior of the panel or lining.

Spanesi's exclusive glue formulation facilitates difficult repair procedures to be completed on rocker panels, roofs, dog legs, door sills, along body lines and pillar locations.

### 01 — **CYCLE TIME AND COST REDUCTION**

Increased touch times.  
Decreased parts ordering.  
Faster vehicle repairs.

### 02 — **EFFICIENT**

Repair panels without removing paint from panel surfaces and instantly checking the end result.

### 03 — **CONVENIENT**

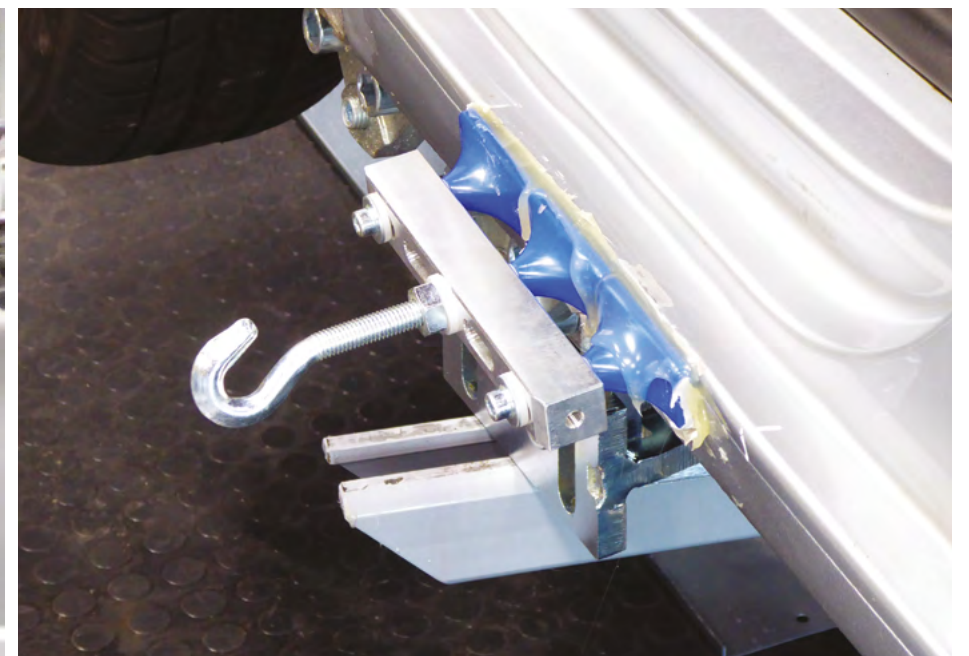
No need to disassemble the vehicle, disconnect the battery, reset and calibrate Advanced Driver Assistance Systems (ADAS).

WATCH THE VIDEO





PATENT PENDING



04 \_\_\_\_\_  
**EASY TO COMPLEX DAMAGE TYPES**

Suction cups comprised of multiple shapes and sizes can be combined to address the most difficult repair scenarios.

05 \_\_\_\_\_  
**FEWER PARTS TO REPLACE**

Restore the original panel's shape and appearance without intrusive part replacements.

06 \_\_\_\_\_  
**MINIMIZE WELDING**

Repairs are accomplished in a non-invasive approach, decreasing the opportunity for panels to be altered by the introduction of heat, burn-through and compromised corrosion protection.

07 \_\_\_\_\_  
**FULL PULLING FORCE CONTROL**

Straighten using a combination of pull bars and our Electro puller (optional).

WATCH THE VIDEO





## PULL UP! FULL - 90PULUP010

- 5 Slide hammers
- 120 Shaped suction cups
- 65 Thread pivots
- 8 Double combination bars
- 4 Triple combination bars
- 3 Nylon hammers
- 2 Polycarbonate trowels
- 3 Nylon wedges
- 1 Nylon cone
- 1 450W Hot glue gun
- 5 Kg d.15 hot glue



The repair solution for major and complex damage types. Up to 4 suction cups may be combined for simultaneous pulls in large repair areas. Can be used with the Electro puller (optional).

## PULL UP! STANDARD - 90PULUP020

- 5 Slide hammers
- 60 Shaped suction cups
- 32 Thread pivots
- 4 Double combination bars
- 3 Nylon hammers
- 2 Polycarbonate trowels
- 3 Nylon wedges
- 1 Nylon cone
- 1 450W Hot glue gun
- 5 Kg d.15 hot glue



The repair solution for small to moderate damage types. Up to 2 suction cups may be combined for simultaneous pulls. Can be used with the Electro puller system (optional).

## PULL UP! LIGHT - 90PULUP060

- 5 Slide hammers (3 Slide hammers for 90PULUP140)
- 60 Shaped suction cups
- 32 Thread pivots
- 1 450W Hot glue gun
- 5 Kg d.15 hot glue



Compact trolley filled with all of the tools necessary for single-pull repairs.

## PULL UP! BASIC - 90PULUP050

- 5 Slide hammers (2 Slide hammers for 90PULUP200)
- 30 Shaped suction cups
- 16 Thread pivots
- 1 450W Hot glue gun
- 5 Kg d.15 hot glue



Transportable carrying case packed with all of the tools necessary to perform single-pull repairs at remote locations.

## PULL UP! SLIM - 90PULUP170

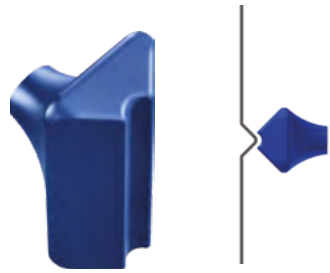
- 2 double combination bars
- 48 Shaped suction cups
- 1 450W Hot glue gun
- 5 Kg d.15 hot glue



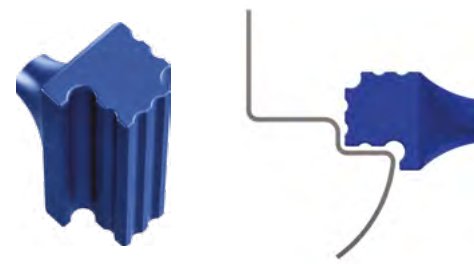
The PULL UP! Slim is ideal to be combined with the Flash pulling system.



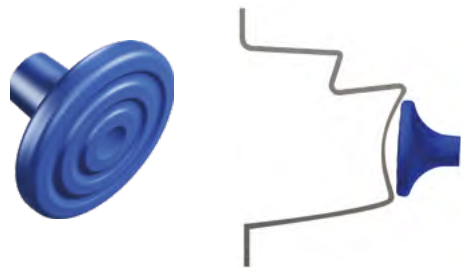
CONVEX



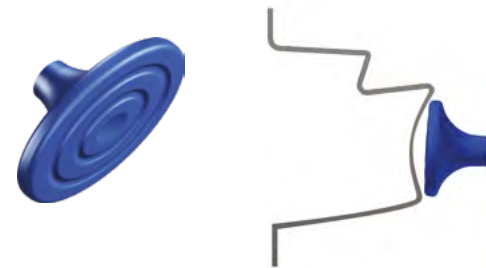
ANGLED



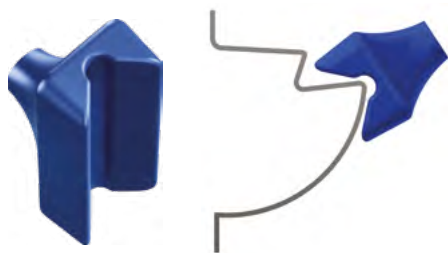
ROUND



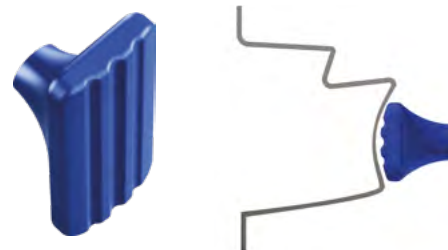
OVAL



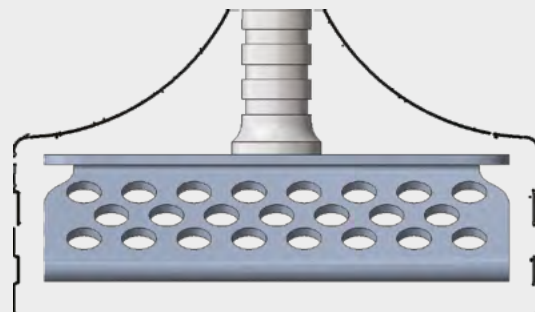
CONCAVE



RECTANGULAR



Each suction cup style is available in different sizes.



Suction cups are built with steel cores to guarantee strength and reliability during pulling.

## RECOMMENDED ACCESSORIES



Designed for the Pull UP! "Light" version, kit includes double combination bars M6, M8, M10, M12 kit with screws and nylon washers (suction cups excluded):

**90KPUP0110:** M6 combination bar

**90KPUP0120:** M8 combination bar

**90KPUP0130:** M10 combination bar

**90KPUP0140:** M12 combination bar

**90KPUP0150:** M12/M10 and M8/M6 combination bars



**90KPUP0010** - Accessory kit to install the Electro puller onto Spanesi pulling columns.

Electro puller



**SP740001** - Electro puller multi-directional pulling tool complete with accessories. Includes, (2) 14.4V 110/220V 50/60 Hz lithium ion batteries.

Flash



**90STR00010** - Flash - Fast pulling system (max. pulling strength 250kg)



**Spanesi S.p.A.**

Via Praarie 56/II - 35010  
Cavino di San Giorgio  
delle Pertiche (PD) ITALY  
Tel. +39 049 933 32 11  
e-mail: [info@spanesi.it](mailto:info@spanesi.it)